

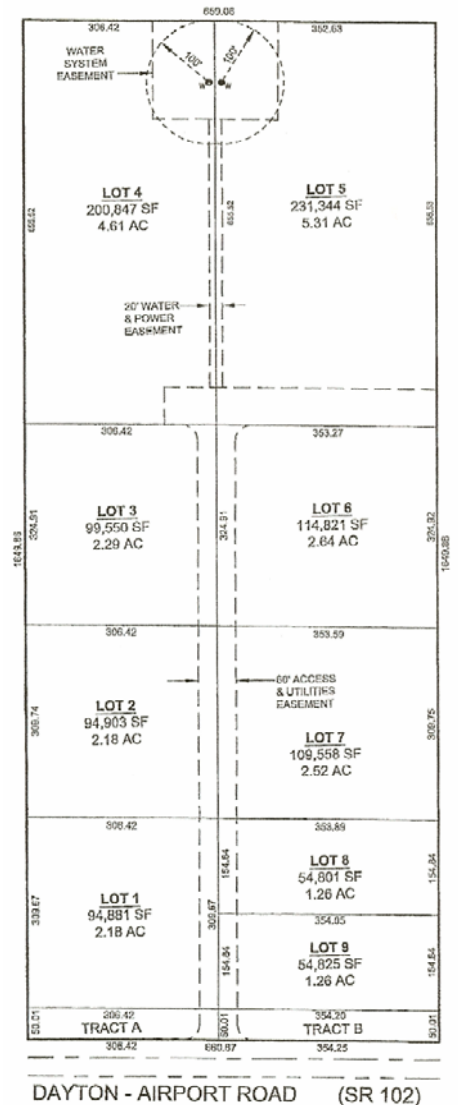
AVAILABLE PROPERTIES



DAYTON-AIRPORT RD. IN SHELTON, WA

- A nine lot business park adjacent to the Port of Shelton airport property.
- Finished lots to include water, power, natural gas, and high speed internet.
- New Mason County maintenance shop and fairgrounds are planned for the bordering property.
- Zoned Industrial

Lot 1:	2.18 acres - \$247,250
Lot 2:	2.18 acres - \$247,250
Lot 3:	2.29 acres - \$258,750
Lot 4:	4.61 acres - \$477,250
Lot 5:	5.31 acres - \$534,750
Lot 6:	2.64 acres - \$297,850
Lot 7:	2.52 acres - \$284,050
Lot 8:	1.26 acres - \$161,000
Lot 9:	1.26 acres - \$161,000



Economic Development Council

P.O. Box 472
2948 Olympic Hwy N
Shelton, WA 98584



Matt Matayoshi
360.426.2276
matt@masonedc.com