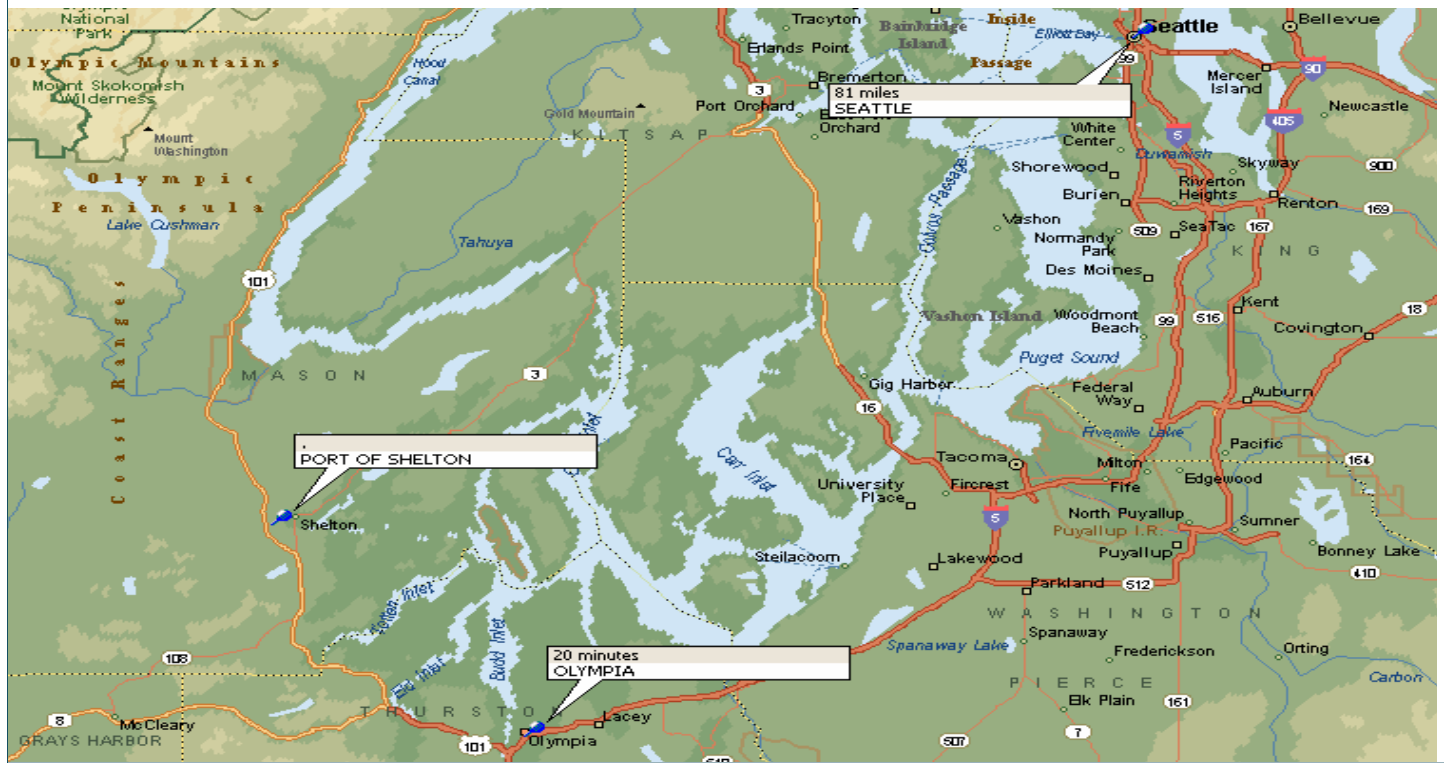


AVAILABLE PROPERTY

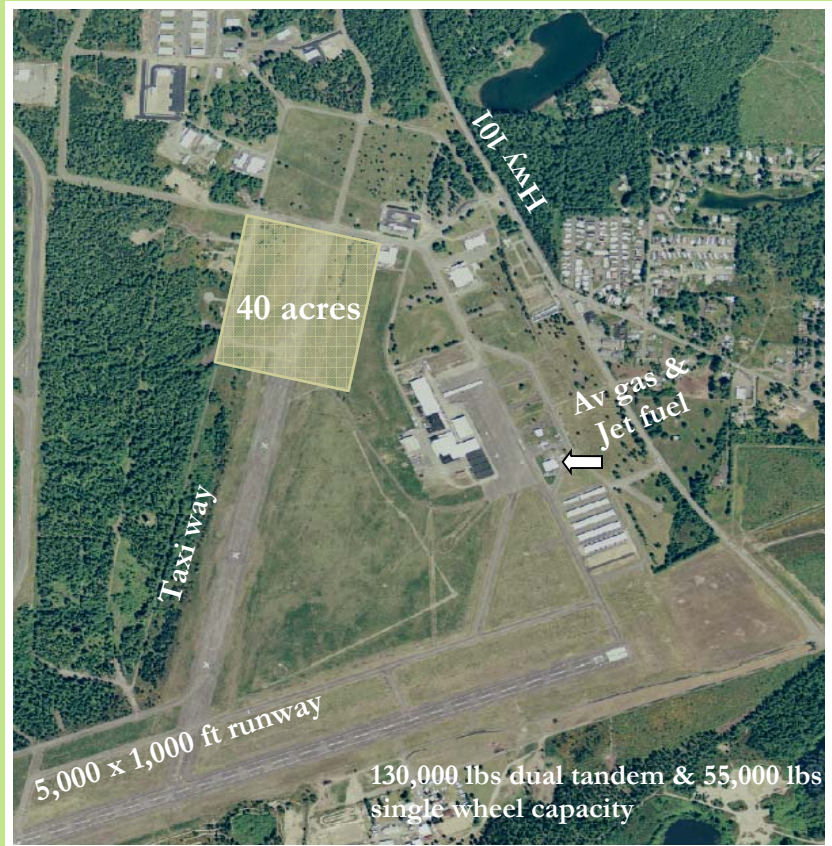


PORT OF SHELTON - SHELTON, WA

- Parcel Size:** 40 acres
- Building Type:** Industrial
- Power:** Public Utility District # 3
- Fiber Optic:** OC-192 fiber optics
- Water:** Port Water System
- Sewer:** Treatment facility under construction
- Sale/Lease:** Lease
- Rail Access:** 3 miles from site
- Natural Gas:** Yes
- Zoning:** Industrial

LISTING COMMENTS

- Long term leases
- Proactive permitting assistance
- Advocate of public private partnerships
- Level stable ground
- Build to suit/Competitive prices



Economic Development Council
of Mason County

P.O. Box 472
2948 Olympic Hwy
Shelton, WA 98584



Matt Matayoshi
360.426.2276 office
matt@masonedc.com